



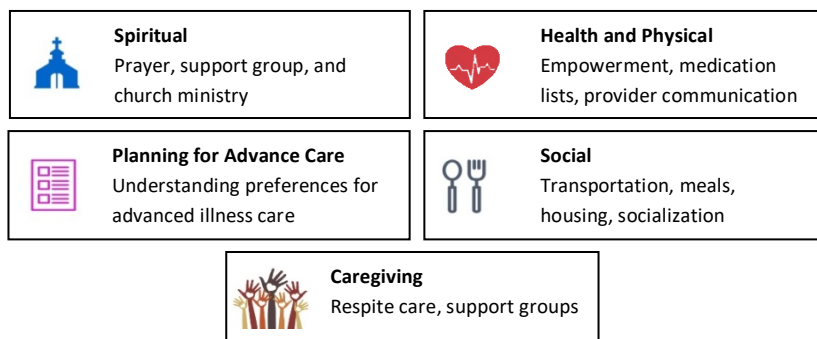
Alameda County Care Alliance - A Faith-based Advanced Illness Care Program™

Background

In 2014, five denominationally diverse African-American Pastors in Alameda County recognized increasing problems with serious health concerns among their congregants and poor integration of spiritual concerns into health care. In response, they created the Alameda County Care Alliance Advanced Illness Care Program™ (ACCA-AICP) a faith-based, person-centered, lay care navigation intervention serving predominantly African American adults with advanced illness and their caregivers in alignment with their spiritual and religious values. The ACCA extends capacity for advanced illness care beyond the traditional health delivery system, bridging the gap between health delivery systems, community organizations and faith-based communities. The program is now in 12 African American churches in Alameda County and Contra Costa County.

Program Overview

Through a series of 10 in-person and telephone interactions over 6 months, ACCA care navigators address needs, provide trusted resources, and empower persons needing advanced illness care and their caregivers in 5 big cornerstones:



The Advanced Illness Care Program™ leverages key attributes of a diverse faith-led infrastructure that are critical for improving the care of persons needing advanced illness care and their caregivers, including trust, spiritual guidance, and access to health and other community services. Over the last 2 years, the Advanced Illness Care Program™ has helped over 1,300 persons needing care and caregivers. In the first year, care navigators identified and made more than 1000 referrals to local resources, successfully addressing 80% of participants' stated needs.

Workforce

The AICP trains and deploys 12 care navigators and over 20 volunteer care ministers. As trusted members of church communities, care navigators help congregants meet their advanced illness care needs and link them to resources (e.g., food, housing, transportation, social services, spiritual support, respite care, health care, palliative care, hospice) as well as provide them with tools, enhanced skills, and empowerment for communication with their clinicians and managing other needs.



Care Navigators

- Active faith community members
- Lay workers trained in community outreach and advanced illness care
- Build trusting relationships
- Recruit and enroll PNCs and Caregivers
- Determine participant needs
- Empower, encourage, advocate
- Recommend trusted resources
- Document program activities

Collaborating Organizations

Hub Churches

- Allen Temple Baptist Church
- Glad Tidings Church of God in Christ
- Center of Hope Community Church
- Family Bible Fellowship
- Greater St. John Missionary Baptist Church

Expansion Churches

- Church by the Side of the Road
- Covenant Center
- Word Assembly A Family of Churches
- Bethlehem Missionary Baptist Church
- Parchester First Baptist Church
- Miracles of Faith
- ACTS Full Gospel

Project Partners

- Public Health Institute
- Betty Irene Moore School of Nursing, UC Davis
- Center for Elders' Independence
- Coalition to Transform Advanced Care
- Family Caregiver Alliance
- Horizon Clinical Services
- The Zen Hospice Project
- Highland Hospital
- Kaiser Permanente
- Community Health Center Network

Funding Organizations

- Kaiser Permanente Community Benefit
- The Rita and Alex Hillman Foundation
- The Stupski Foundation
- The San Francisco Foundation